



AX1769

Skid plate

KTM 85SX

Assembling instructions

What's in the box ?

- 2 PM01-04-294 - Rear hook
- 1 PM01-04-295 - PEHD front fixation
- 1 NE04-01-280 - Sticker
- 2 NE01-11-001 - THF 6x25mm screws
- 6 NE01-04-003 - EM6F bolts
- 6 NE01-03-001 - M6 washers
- 2 NE01-04-002 - Clamped bolts
- 6 NE01-02-004- TFHC 6x30mm screws



The paper instructions may be limitless, a tutorial video is available online to help you.

Scannez le QR code pour regarder la vidéo de montage.



Approximate time of assembly: 15 minutes.

A skid plate is made to protect the vital components of your bike and does not have a « life warranty ». However, production default may happen and we cover it during the first year of use.

In case of premature breakage, please write to contact@axpracing.com

Follow the steps !



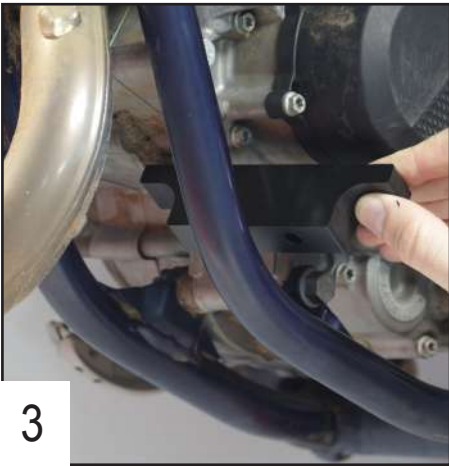
1

Place the clamped bolts in the front fixation.



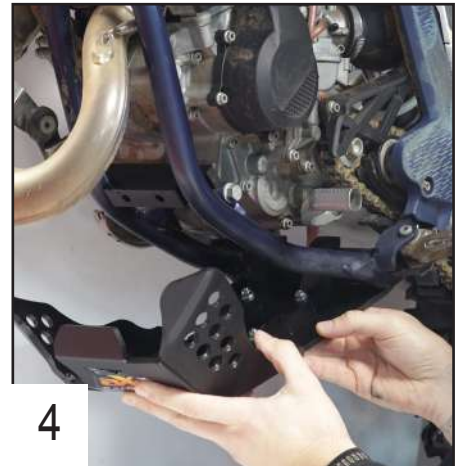
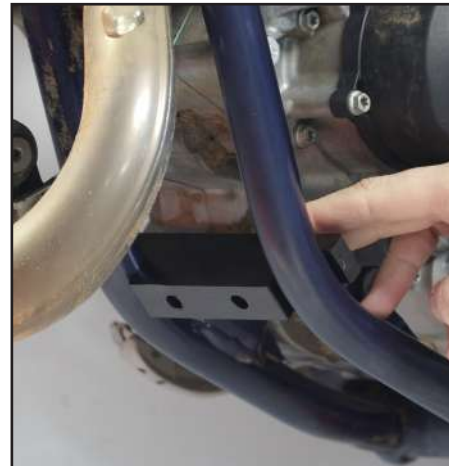
2

Place the 2 plastic hooks on the rear of the skid plate using TFHC 6x30mm screws + M6 washers and EM6F bolts, then tighten.



3

Place the front fixation in the frame and clip it inside the bars.



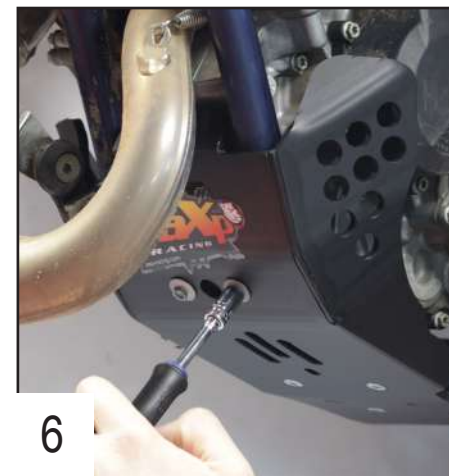
4

Clip the rear hooks on the frame.



5

Lift the skid plate up to put the THF 6x25mm screw in.



6

Place the second screw in and tighten.

You're all ready to ride !