



AX1776

Adventure skid plate

BMW F900GS

Compatible with Outback
Motortek crash bars

What's in the box ?

- 1 PM01-04-296 - Front left fixation
- 1 PM01-04-297 - Front middle fixation
- 1 PM01-04-298 - Front right fixation
- 2 PM01-04-299 - Rear fixation
- 1 PM01-04-300 - Bottom plastic block
- 1 NE04-01-283 - Sticker
- 2 NE01-06-013 - TH 6x40mm screws
- 2 NE01-02-005 - TFHC 6x35mm screws
- 2 NE10-01-004 - Alloy spacers
- 4 NE01-04-002 - Clamped bolts
- 4 NE01-02-004 - TFHC 6x30mm screws
- 3 NE01-02-003 - TFHC 6x25mm screws
- 7 NE01-04-003 - EM6F bolts
- 11 NE01-03-001 - M6 Washers
- 2 NE01-05-008 - TCHC 6x45mm screws
- 2 NE01-05-001 - TCHC 6x30mm screws
- 1 NE13-01-001 - 8mm foam stickers



The paper instructions may be limitless, scan the QR code to watch the tutorial video online.

Assembling instructions

Approximate time of assembly: 30 minutes.

A skid plate is made to protect the vital components of your bike and does not have a « life warranty ». However, production default may happen and we cover it during the first year of use.

In case of premature breakage, please write to contact@axpracing.com

Follow the steps



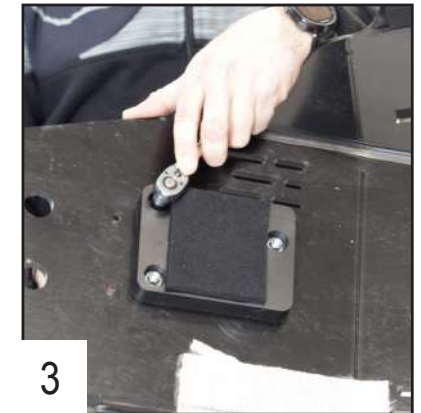
1

Stick the foam on the bottom plastic block.

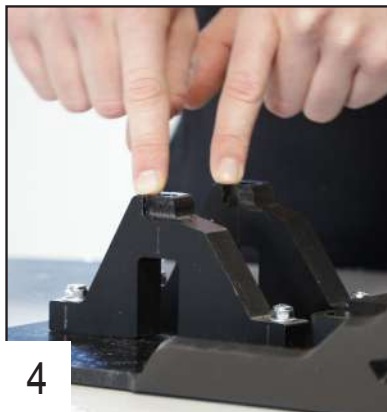


2

Place the plastic block on the bottom of the skid plate using 3 TFHC 6x25mm screws + M6 washers and bolts then tighten.



3



4

Place the 2 rear fixations in plastic using 4 TFHC 6x30mm screws. The machined sides must be on the right.



5

Tighten the screws.



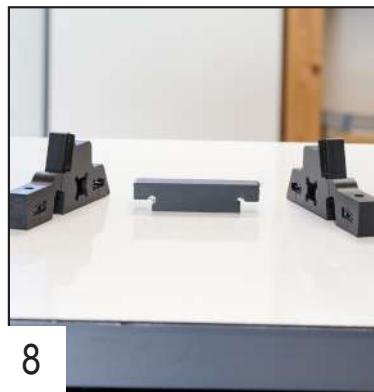
6

Place the 4 clamped bolts inside the front fixation.



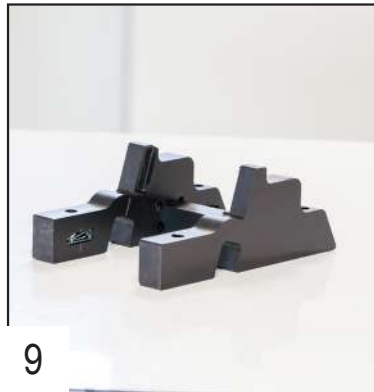
7

Repeat the operation on the second front fixation.

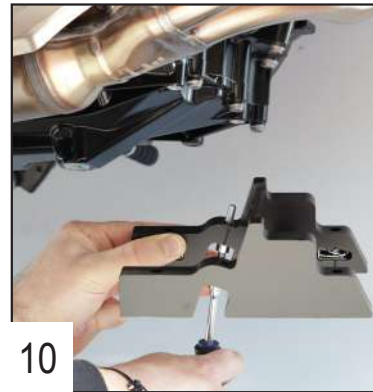


8

Clip the front middle block inside the fixations.



9



10

Use 2 TCHC 6x30mm screws + M6 washers to fix the front fixation directly on the engine block and tighten.

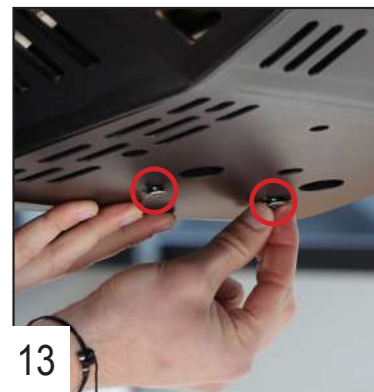


11



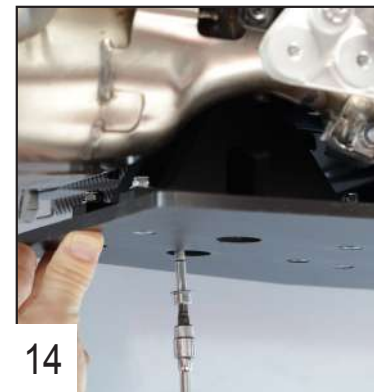
12

Place the skid plate under the frame.



13

Place 2 TFHC 6x35mm screws in the middle holes to keep the plate in place, do not tighten.



14

Place 2 TCHC 6x45mm screws + M6 washers in the rear fixations without tightening.

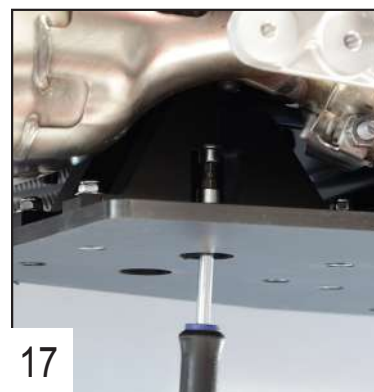


15

Put the alloy spacers in the front holes, then place 2 TH 6x40mm screws without tightening.



16



17

Tighten the rear screws.



18

Then tighten the middle and the front screws.



19

You're all ready to ride.