



AX1767

Radiator guards

Sherco

What's in the box ?

- 4 NE01-01-008 - TBHC 6x25mm screws
- 2 NE01-01-011 - TBHC 6x35mm screws
- 2 NE01-01-001 - TBHC 6x16mm screws
- 2 NE01-04-003 - EM6F bolts
- 10 NE01-03-001 - M6 washers
- 2 PM01-07-081 - HDPE 6mm brackets
- 1 PM01-07-077 - Left side middle wing
- 1 PM01-07-078 - Ride side middle wing
- 1 PM01-07-079 - Left side outside wing
- 1 PM01-07-080 - Right side outside wing
- 1 PM01-07-082 - Left side inside wing
- 1 PM01-07-083 - Right side inside wing
- 1 PM01-05-031 - HDPE left side part
- 1 PM01-05-032 - HDPE right side part



For better durability, you can use
Loctite 271 on all the screws.

The paper instructions may be limitless, scan the QR code to watch the tutorial video online.



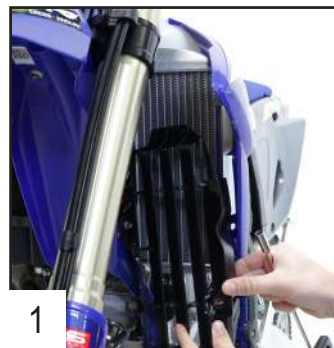
Assembling instructions

Radiator guards are made to protect the radiators of your bike and do not have a « life warranty ». However, production default may happen and we cover it during the first year of use.

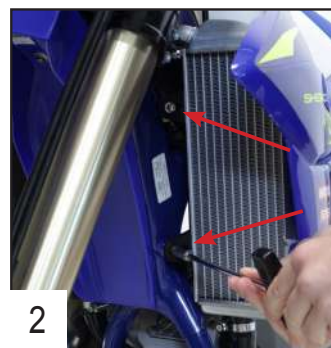
In case of premature breakage, please write to contact@axpracing.com

Approximate time of assembly: 30 minutes.

Follow the steps



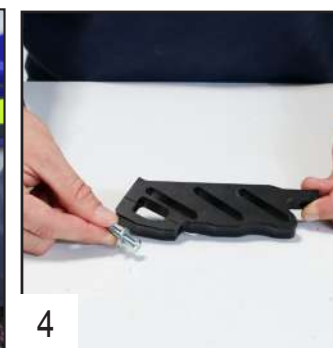
1 Remove the OEM guards.



2 Remove the OEM screws.



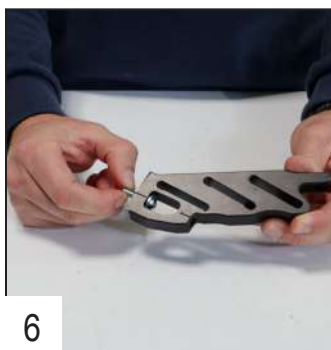
3 Remove the side screws to have a better access to the radiators.



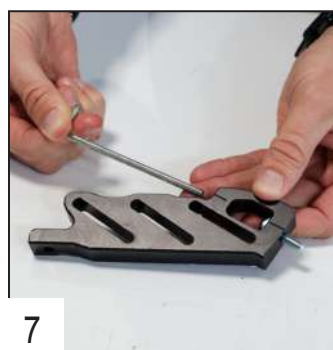
4 Take one TBHC 6x25mm screw + washer and put it through the hole to fix it on the frame.



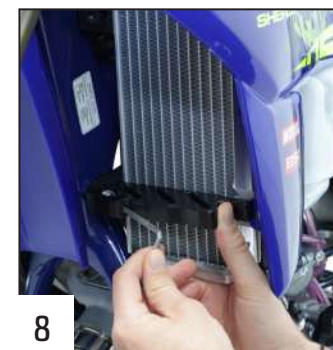
5 Take one TBHC 6x25mm screw + washer and put it through the hole to fix it on the frame.



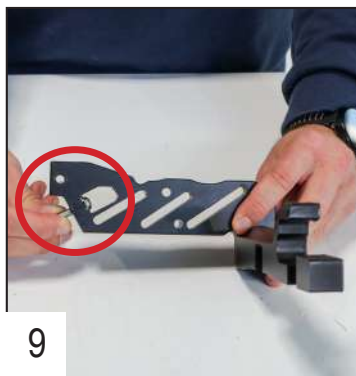
6 Maintain the screw out to fix it on the frame.



7 Use the aligned hole to pass the tool.



8 Fix the smaller part on the bike and tighten the screw.



9

Repeat the operation on the upper fixation. Pass the TBHC 6x25mm screw inside the block.



10

Move aside the plastic cover and place the upper fixation on the radiator.



11

Make sure the fixation rests against the frame.



12

Tighten the screw using the aligned hole to pass the tool.



13

Place the plastic bracket in the top hole and align it with the radiator fixation.



14

Use one 6x16mm screw + M6 washer and bolt, then tighten.



15

Make sure to place the plastic cover between the plastic block and the radiator fixation.



16

Use a 6x35mm screw to fix the plastic block, radiator and plastic cover all together.



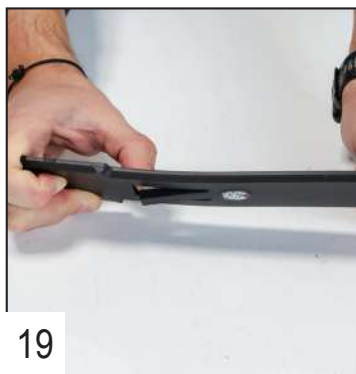
17

Tighten the screw.



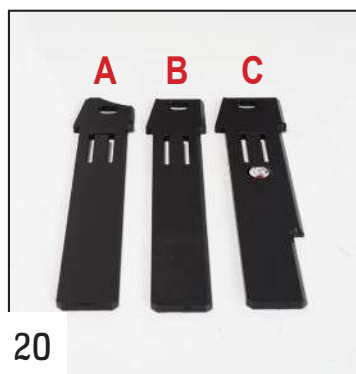
18

Put the side screw back in place and tighten.



19

Push the strip to deform it and maintain the wing once in place. Then repeat the operation on the other wings.



20

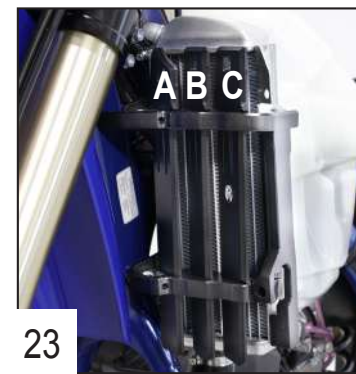


21

Place the wings in the holes and make sure to clip them so they don't go out again. Then repeat the operation on the other side.



22



23

You're all ready to ride.