



AX1751

Xtrem radiator braces

Beta 350RR / 390RR / 430RR
/ 480RR Racing

What's in the box ?

- 4 NE03-02-033 - Red spacers 125mm
- 1 NE03-01-014 - Alloy spacer 45mm
- 1 PM01-07-075 - Right HDPE grid
- 1 PM01-07-076 - Left HDPE grid
- 2 NE10-01-008 - Alloy spacers 3mm
- 4 NE01-06-009 - TBHC 5x25mm screws
- 10 NE01-01-001 - TBHC 6x16mm screws
- 8 NE01-01-009 - TBHC 6x20mm screws
- 4 NE01-04-002 - Clamped bolts
- 2 NE01-04-003 - EM6F bolts
- 4 NE01-03-001 - M6 washers
- 2 NE01-07-009 - TRCC 6x16mm screws



For better durability, you can use Loctite 271 on all the screws.

The paper instructions may be limitless, scan the QR code to watch the tutorial video online.



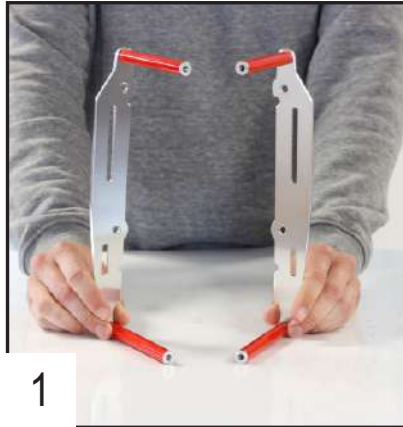
Note: the colored instructions are available on axp-racing.com

Assembling instructions

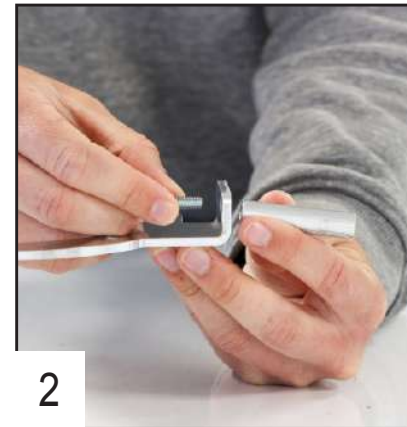
Approximate time of assembly: 30 minutes.

Radiator braces are made to protect the vital components of your bike and does not have a « life warranty ». If you notice a defect on your radiator guards at reception, please write to contact@axpracing.com

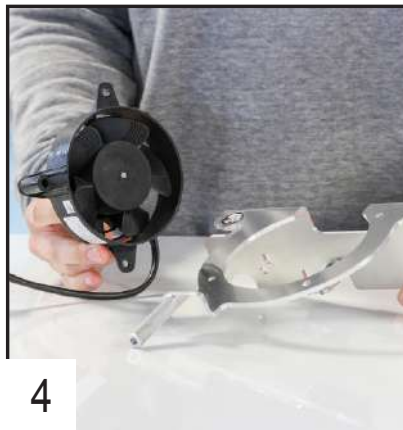
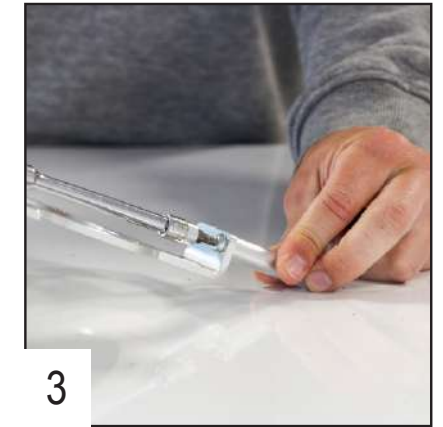
Follow the steps



1 Fix the 125mm red spacers in the 2 holes on each side using TBHC 6x16mm screws.



2 Fix the alloy spacer on the right guard using a TBHC 6x16mm screw.



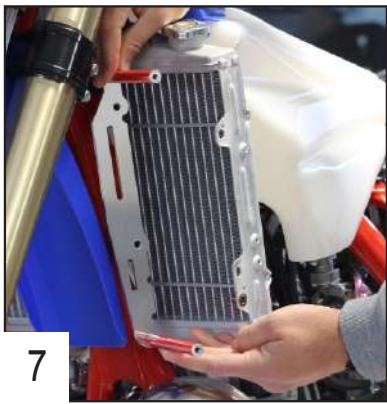
4 Put the ventilator in the hole.
WARNING: the Beta OEM fan is not included with the bike, so you must buy it separately.
Ref : 037.46.036.82.00



5 Place 4 TBHC 5x25mm screws to maintain the fan, then tighten.

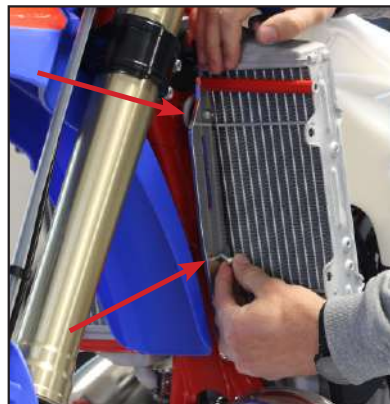


6 Place the clamped bolts in the aluminum part, and repeat the operation on the other part.
WARNING: the flat side must face on the outside



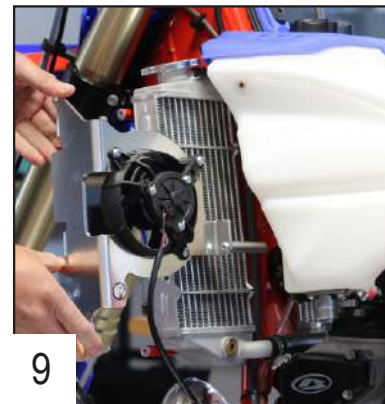
7

Place the left side first using 2 TBHC 6x20mm screws and tighten.



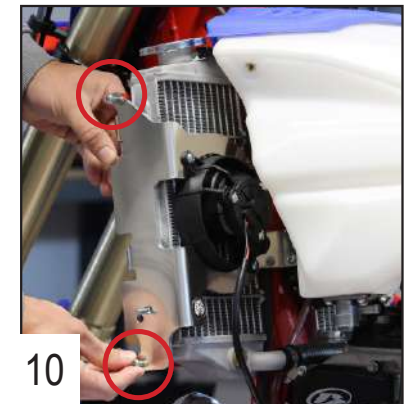
8

Place the TRCC 6x16mm screw in the square, it must face the outside and will fix the plastic (see n°12).



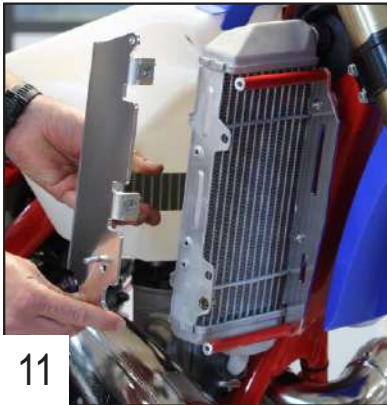
9

Put the rear part in place, you must insert the spacer between the frame and the tank.



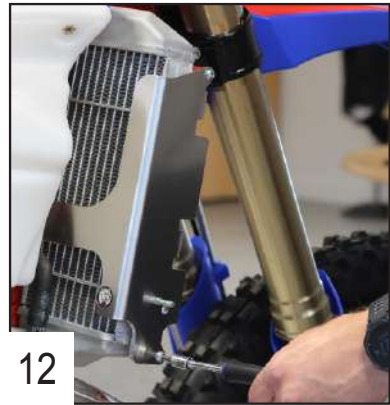
10

Fix the rear part with 2 TBHC 6x16mm screws and tighten.



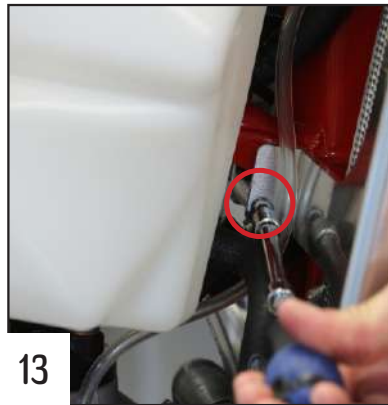
11

Repeat the operation on the other side and put the rear part in position.



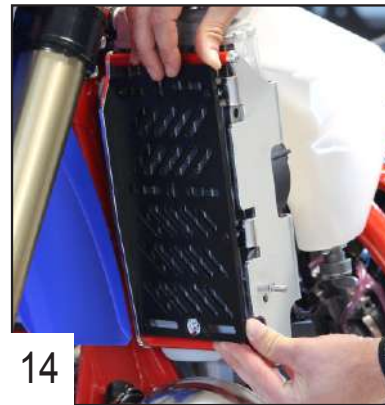
12

Place 2 TBHC 6x16mm screws in position without tightening.



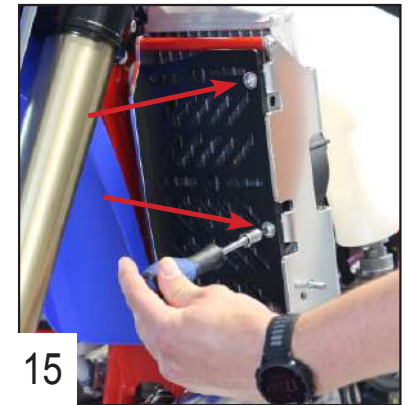
13

Place the TBHC 6x16mm screw in the spacer to fix both sides and tighten all the screws.



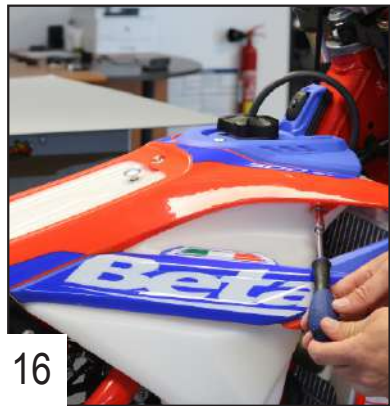
14

Clip the front plate in the guard.



15

Use 2 TBHC 6x20mm screws + M6 washers to fix it and tighten.



16

Put the plastics back in place without tightening the screws.



17

Put the spacer and push the plastic so you can attach the EM6F bolt to the screw. Then tighten all the screws.



18

You're all ready to ride !