



AX1743

Skid plate

Yamaha - YZ250F

Assembling instructions

What's in the box ?

- 2 NE01-04-002 - Clamped bolts
- 1 NE10-01-004 - Alloy spacers
- 2 NE01-03-001 - M6 washers
- 2 NE01-04-003 - EM6F bolts
- 2 NE01-02-002 - TFHC 6x20 screws
- 1 NE01-06-010 - TH 6x15 screws
- 2 NE01-11-001 - Special screws
- 1 NE04-01-247 - Sticker
- 1 PM02-07-028 - Front steel fixation
- 1 PM01-07-037 - Rear fixation PEHD 6mm



The paper instructions may be limitless, a tutorial video is available online to help you.

Scannez le QR code pour regarder la vidéo de montage.

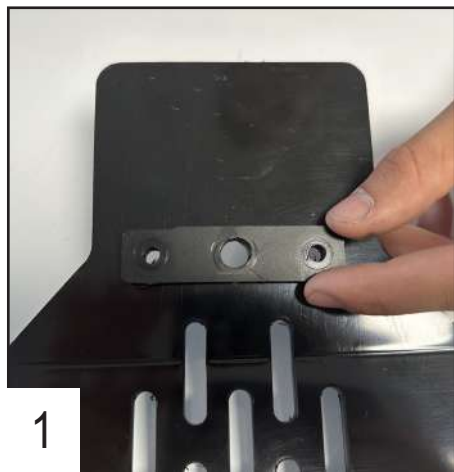


Approximate time of assembly: 15 minutes.

A skid plate is made to protect the vital components of your bike and does not have a « life warranty ». However, production default may happen and we cover it during the first year of use.

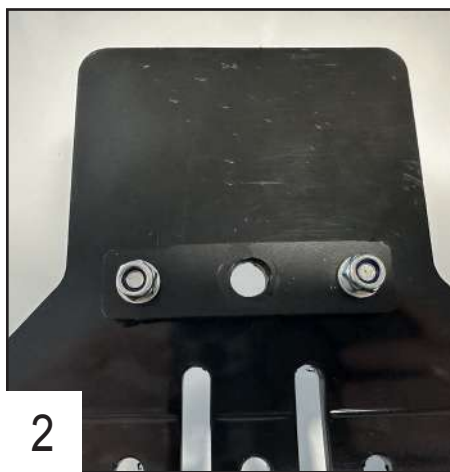
In case of premature breakage, please write to contact@axpracing.com

Follow the steps !



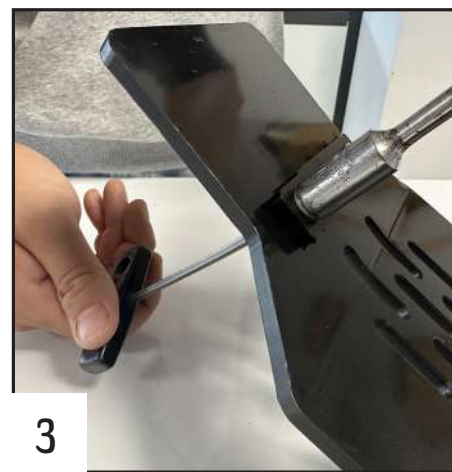
1

Place the small block on the rear part of the plate.



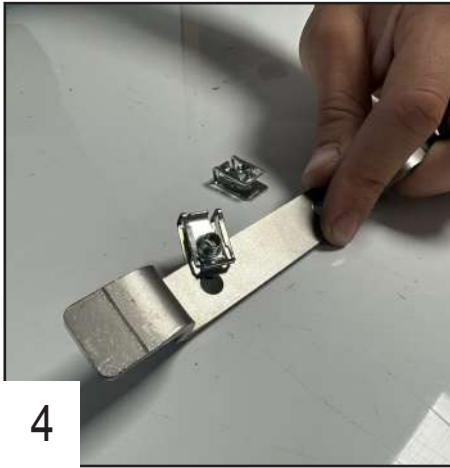
2

Place the TFHC 6x20 screws + washers + bolts.



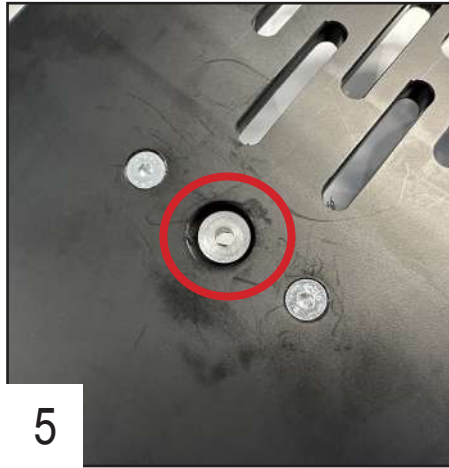
3

Tighten both sides.



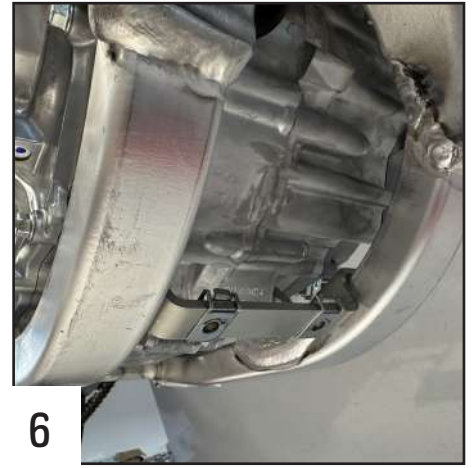
4

Place the clamped bolts on the steel part. Make sure to align them to the holes.



5

Place the alloy spacer on the back of the plate.



6

Place the steel part inside the frame. The round sides of the clamped bolts must be upwards and the part rest on the welds of the frame.



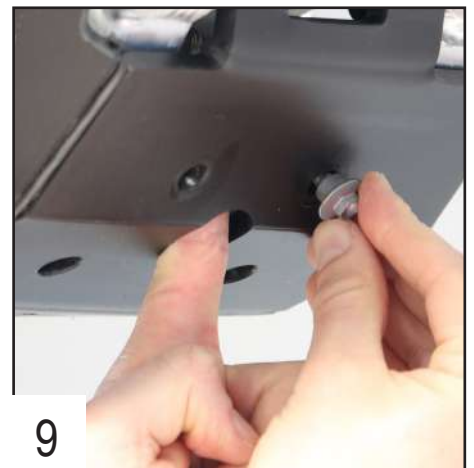
7

Place the plate, it must fit perfectly to the frame.



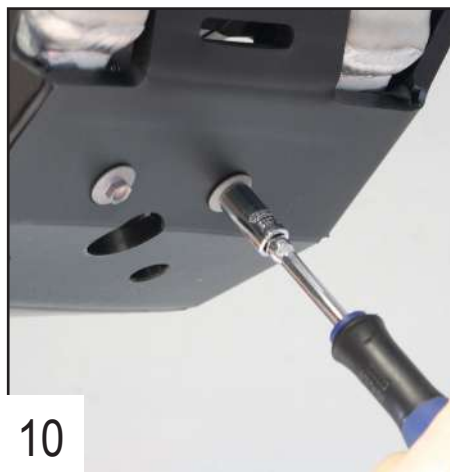
8

Place the TH 6x15 screw at the back first and tighten.



9

Use the hole to maintain the fixation and place the 2 special screws on the front.



10

Tighten the screws.

**You're
all ready
to ride !**