



AX1742
Skid plate
Kawasaki KX450

Assembling instructions

What's in the box ?

- 2 NE01-04-002 - Clamped bolts
- 2 NE01-02-001 - Tfhc 6x16mm screws
- 2 NE01-11-001 - Special screws
- 1 PM01-04-280 - 20mm HDPE plastic block
- 1 NE04-01-263 - Sticker



The paper instructions may be limitless, a tutorial video is available online to help you.

Scannez le QR code pour regarder la vidéo de montage.



Approximate time of assembly: 15 minutes.

A skid plate is made to protect the vital components of your bike and does not have a « life warranty ». However, production default may happen and we cover it during the first year of use.

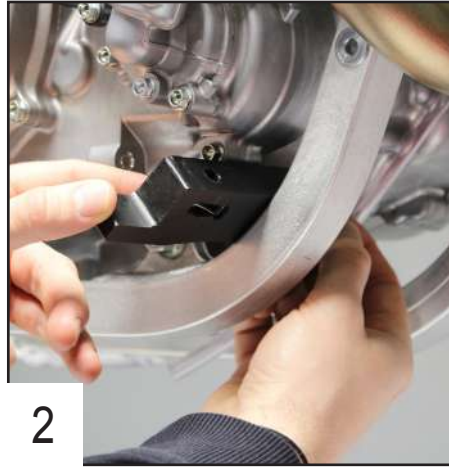
In case of premature breakage, please write to contact@axpracing.com

Follow the steps !



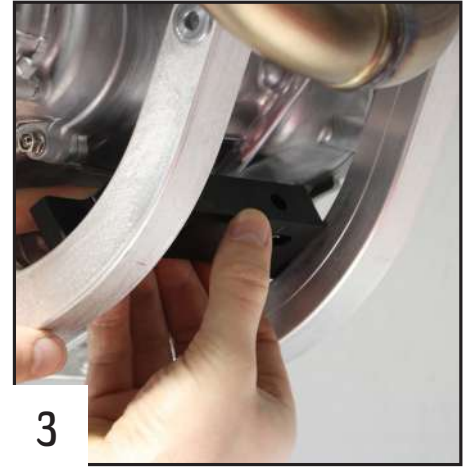
1

Put the 2 clamped bolts in the HDPE plastic block.



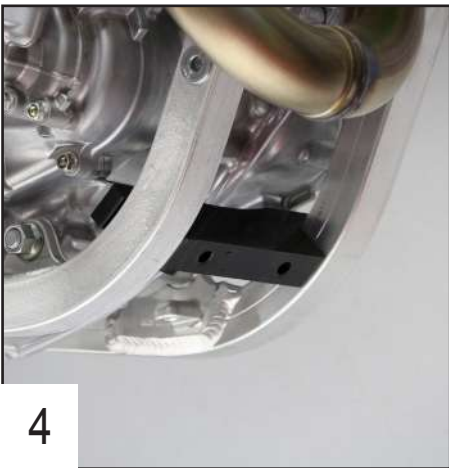
2

Place the HDPE plastic block inside of the frame.



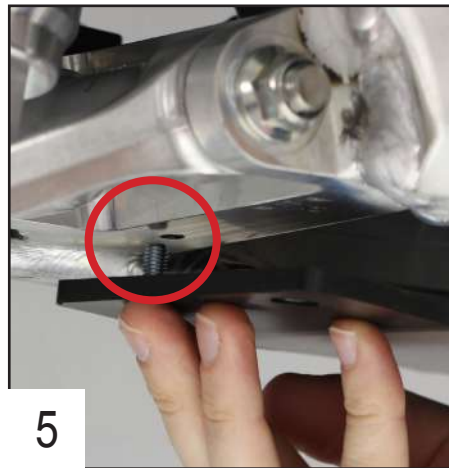
3

Adjust the HDPE plastic block in height.



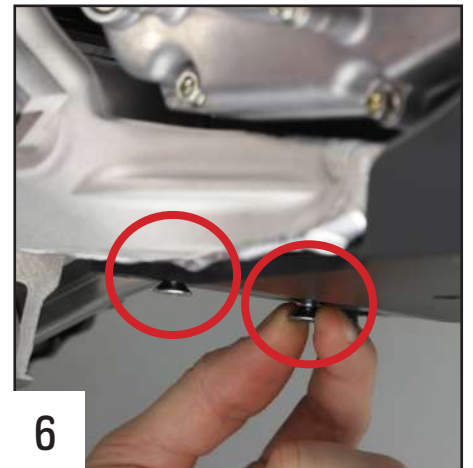
4

The HDPE plastic block must be clipped in the middle of the frame.



5

Put the plate in position and use the hole at the bottom of the frame to fix the rear end.



6

Place the 2 TFHC 6x16mm screws in the rear holes.



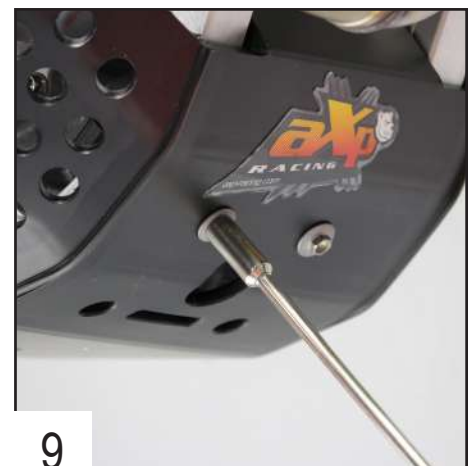
7

Tighten the screws.



8

Use your finger to maintain the plastic block in place and put the 2 special screws.



9

Tighten the screws.

You're all ready to ride !