



# AX1726

## Chain guide

### Sherco

# Assembling instructions

## What's in the box ?

- 3 NE01-03-001 - M6 washers
- 3 NE01-04-003 - EM6F bolts
- 3 NE01-02-013 - TFHC 6x60mm screws
- 1 NE10-01-005 - drilled spacer L:14mm
- 1 NE10-01-006 - alloy spacer 12x6x24mm



The paper instructions may be limitless, scan the QR code to watch the tutorial video online.



Approximate time of assembly: 15 minutes.

Chain guards are made to protect the vital components of your bike and does not have a « life warranty ». If you notice a defect on your chain guard at reception, please write to [contact@axpracing.com](mailto:contact@axpracing.com)

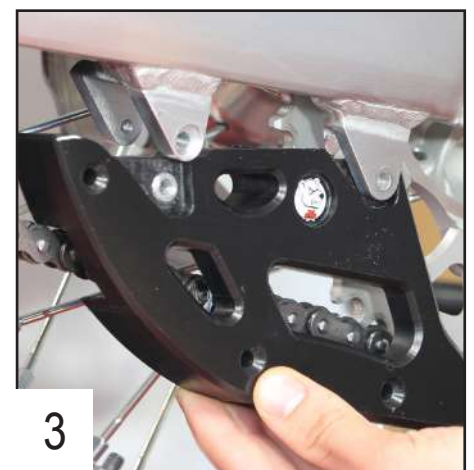
## Follow the steps



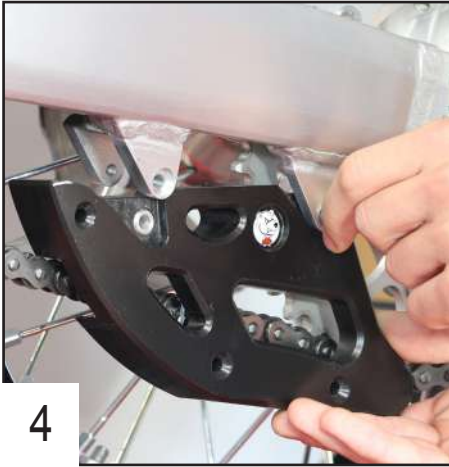
1 Place the alloy spacer in the back hole of the biggest part.



2 And the drilled spacers in the front hole.

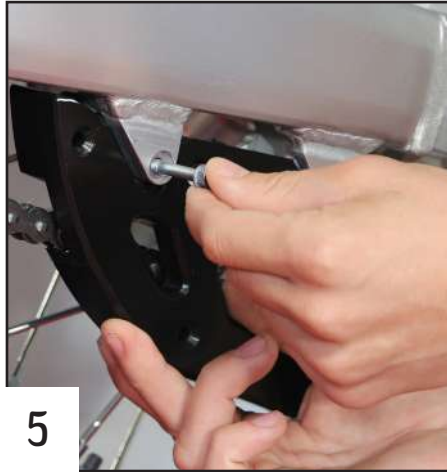


3 Place the biggest part on the swingarm.



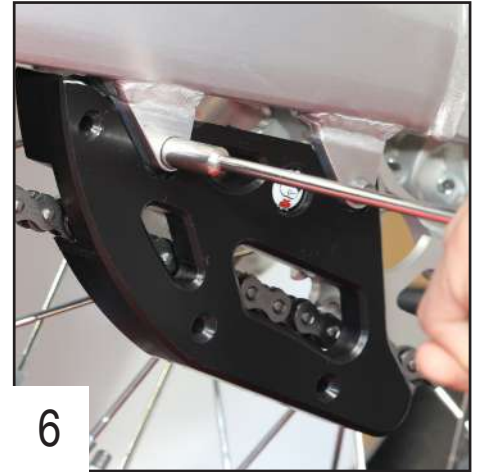
4

Place the OEM screw in the back hole first without tightening.



5

Place the second OEM screw in the front hole.



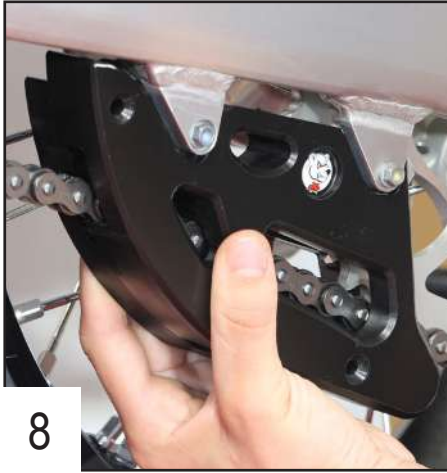
6

Tighten both screws.



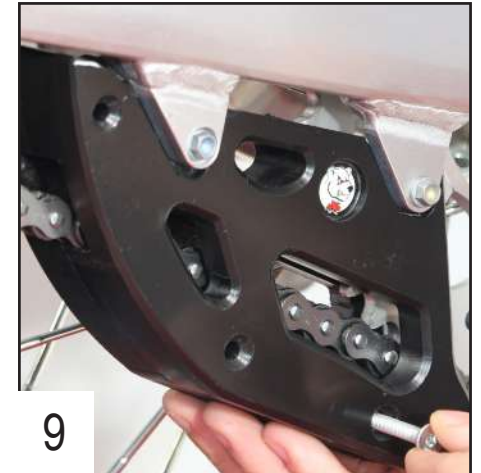
7

Place the second part of the chain guide on the other side of the chain.



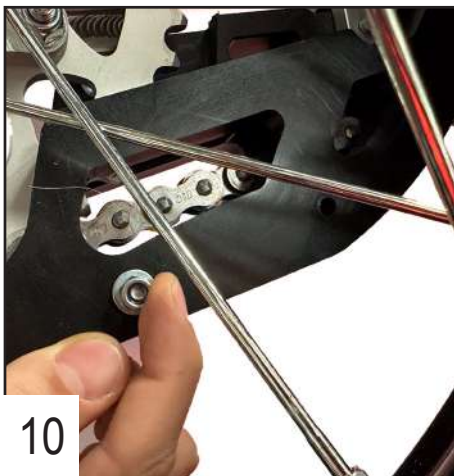
8

Clip the two plastic parts together.



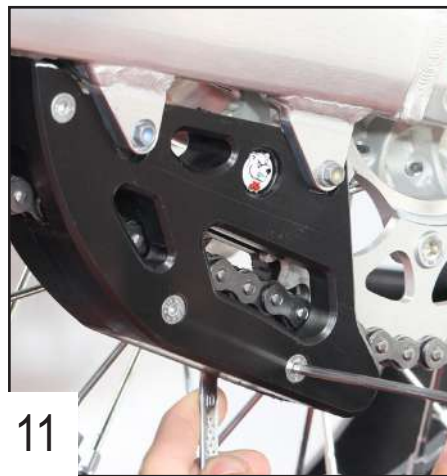
9

Place the 3 TFHC 6x60mm screws in the bottom holes.



10

Use the M6 washers + EM6F bolts on the other side to fix the screws.



11

Tighten the screws.

**You're  
all ready  
to ride !**