



# AX1712

## Xtrem skid plate

### KTM 250/350 EXCF

# Assembling instructions

## What's in the box ?

- 1 PM01-04-268 - Front fixation 20mm
- 2 NE01-04-002 - Clamped bolts
- 2 NE10-01-004 - Alloy spacers
- 2 NE01-04-003 - EM6F bolts
- 2 NE01-02-002 - Screws TFHC 6x20mm
- 2 NE01-10-001 - Screws THF 6x30mm
- 1 NE04-01-219 - Sticker



The paper instructions may be limitless, a tutorial video is available online to help you.

The pictures below might show different components but their function is the same. This does not impact the assembly of the skid plate.



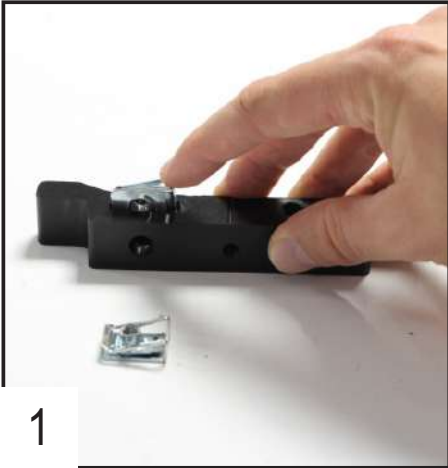
---

Approximate time of assembly: 5 minutes.

A skid plate is made to protect the vital components of your bike and does not have a « life warranty ». However, production default may happen and we cover it during the first year of use.

In case of premature breakage, please write to [contact@axpracing.com](mailto:contact@axpracing.com)

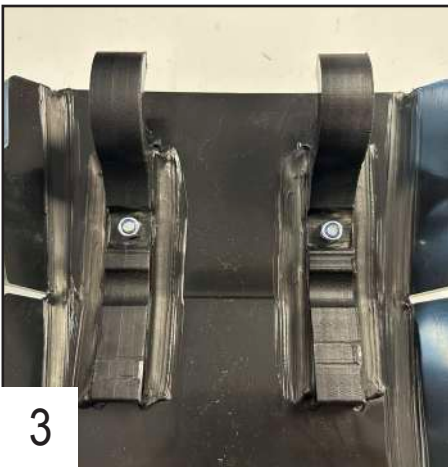
## Follow the steps



Place the two clamped bolts inside the front fixations.



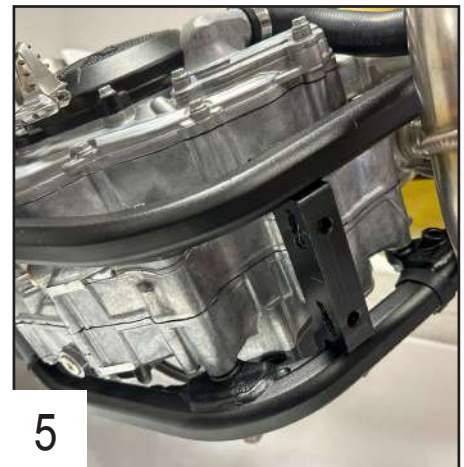
Place the 2 TFHC 6x20 screws + EM6F bolts in the holes.



Tighten the screws.



Place the front fixation on the frame.



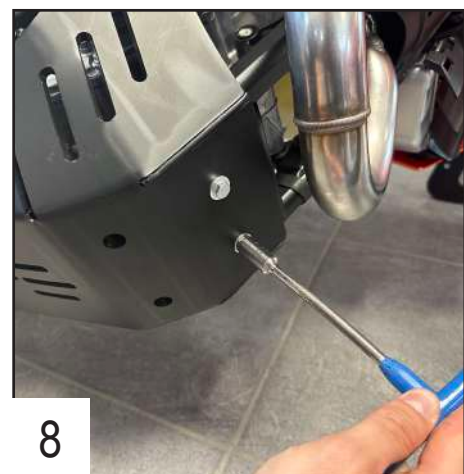
Adjust in height.



Insert the plate on the frame using the 2 hooks.



Lift the plate.



Insert the 2 THF 6x30 screws + alloy spacers and tighten.

**You're all ready to ride !**