



AX1687

Skid plate

Yamaha - YZ450F/ YZ450FX

Assembling instructions

What's in the box ?

- 2 NE01-04-002 - Clamped bolts
- 2 NE10-01-004 - Alloy spacers
- 2 NE01-03-001 - M6 washers
- 2 NE01-04-003 - EM6F bolts
- 2 NE01-02-002 - TFHC 6x20 screws
- 1 NE01-06-010 - TH 6x15 screws
- 2 NE01-06-026 - TH 6x25 screws
- 1 NE04-01-247 - Sticker
- 1 PM02-07-028 - Front steel part
- 1 PM01-07-037 - Rear fixation PHD 6mm



The paper instructions may be limitless, a tutorial video is available online to help you.

Scannez le QR code pour regarder la vidéo de montage.

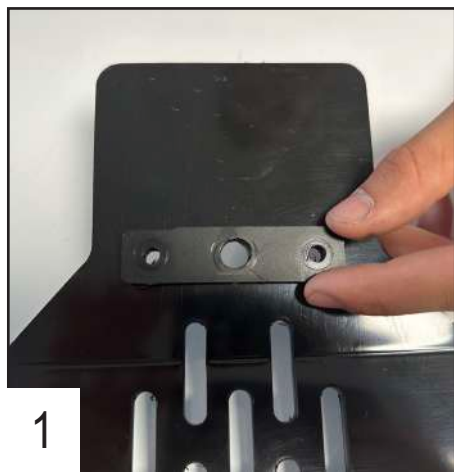


Approximate time of assembly: 15 minutes.

A skid plate is made to protect the vital components of your bike and does not have a « life warranty ». However, production default may happen and we cover it during the first year of use.

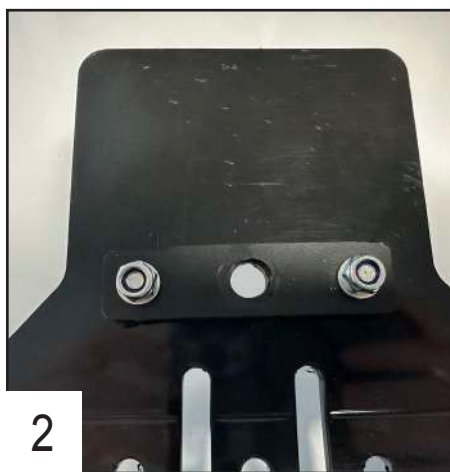
In case of premature breakage, please write to contact@axpracing.com

Follow the steps !



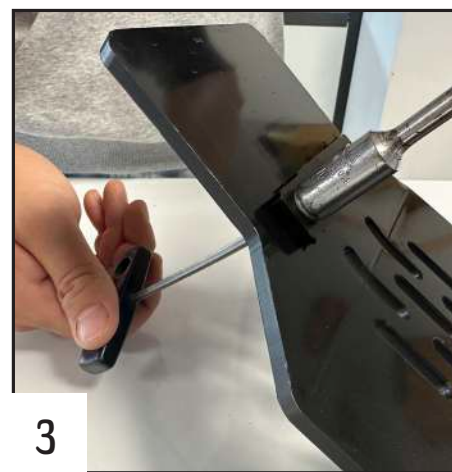
1

Place the small block on the rear part of the plate.



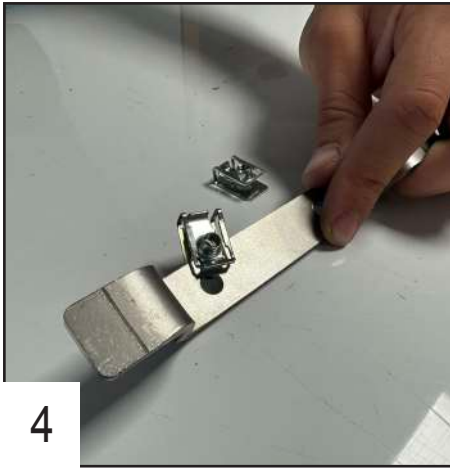
2

Place the TFHC 6x20 screws + washers + bolts.



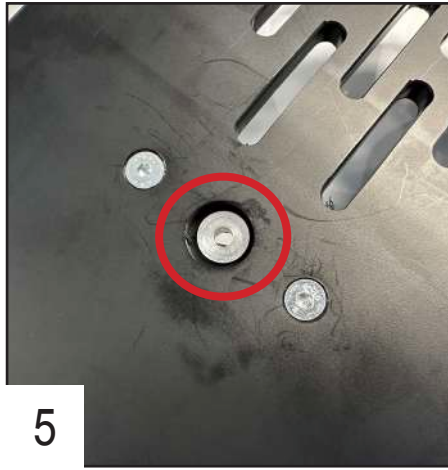
3

Tighten both sides.



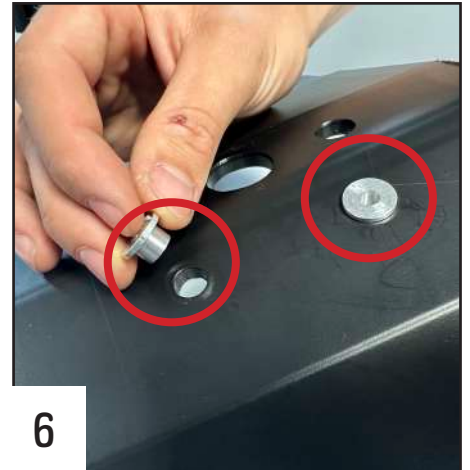
4

Place the clamped bolts on the steel part. Make sure to align them to the holes.



5

Place the alloy spacer on the back of the plate.



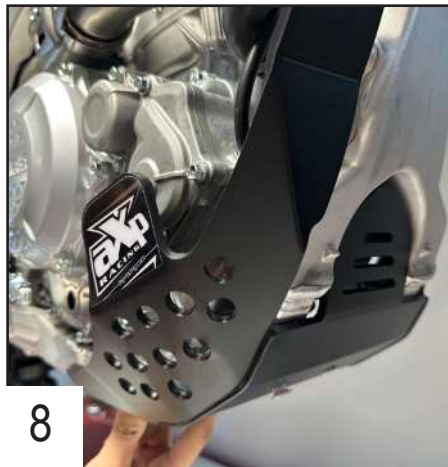
6

Place the alloy spacers on the 2 front holes of the plate.



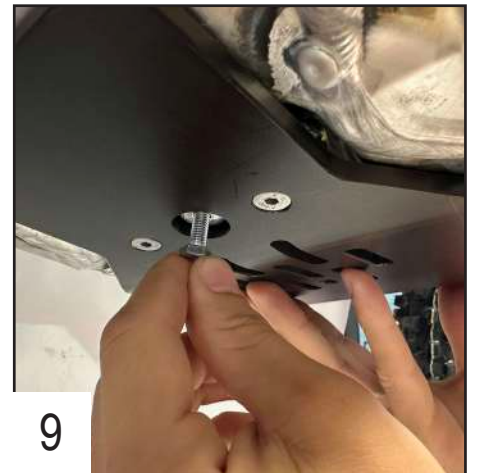
7

Place the steel part inside the frame. The round sides of the clamped bolts must be upwards and the part rest on the welds of the frame.



8

Place the plate, it must fit perfectly to the frame.



9

Place the TH 6x15 screw at the back first and tighten.



10

Use your finger to maintain the steel part in place and have the clamped bolts aligned to the holes.



11

Place the TH 6x25 screws in the front holes and tighten.

You're all ready to ride !