



WARNING : The skid plate will not fit with lower crash bars. The linkage guard plate will fit **only** if you don't use a center stand.



VIDEO



AX1595
HONDA CRF1100L AT
ADV Skid plate



SCAN THE CODE

- 1 PM01-10-012
- 2 PM01-05-020
- 2 PM01-04-208
- 1 PM01-04-209
- 1 PM01-06-062 - Linkage guard
- 1 PM01-09-017 - 10mm plastic
- 1 PM03-04-114
- 2 NE10-01-004 - Alloy spacers
- 4 NE01-03-006 - M6 BIG Washers
- 4 NE01-06-003 - Th 6x30mm
- 2 NE01-11-001 - Screws 6x25mm
- 10 NE01-03-001 - M6 Washers
- 1 NE01-06-029 - Th 6x55mm
- 10 NE01-04-003 - Em6f
- 1 NE01-01-001 - Tbhc 6x16mm
- 2 NE01-02-007 - Tfhc 6x45mm
- 6 NE01-02-003 - Tfhc 6x25mm
- 6 NE01-04-002 - Clamped bolts
- 4 NE01-03-002 - M8 Washers
- 4 NE01-02-012 - Tfhc 8x25mm
- 4 NE01-04-001 - Em8f
- 1 NE04-01-221 - Sticker

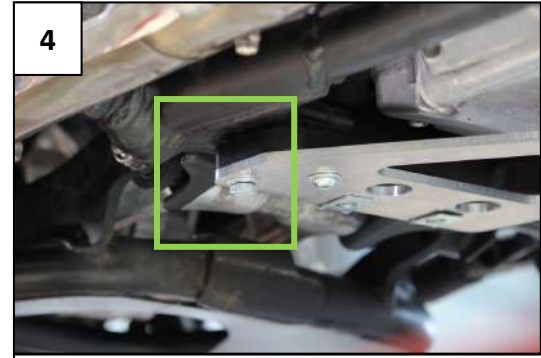


Put the clamped bolts in place : 4x NE01-04-002
Mettre les écrous pincés en place : 4x NE01-04-002

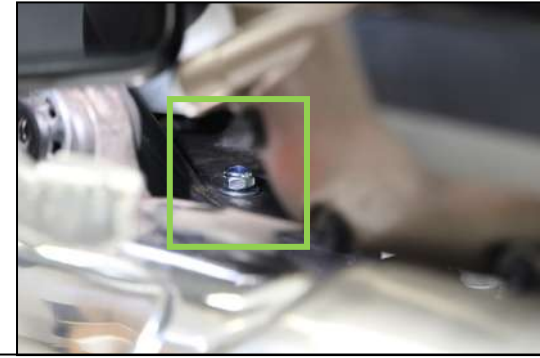
1x PM01-09-017 + 1x Tbhc 6x16mm
+ 2x M6 Washers + 2x Em6f

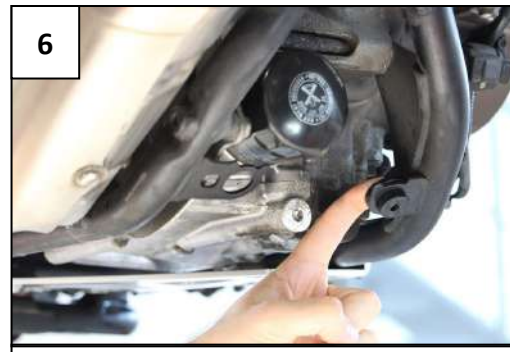
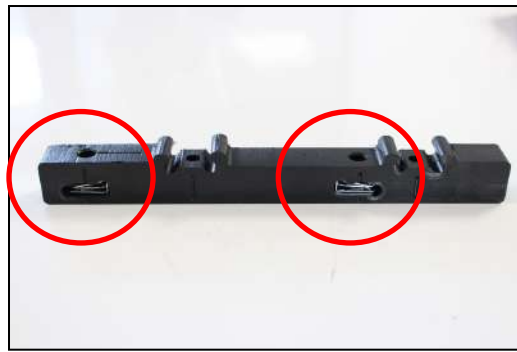
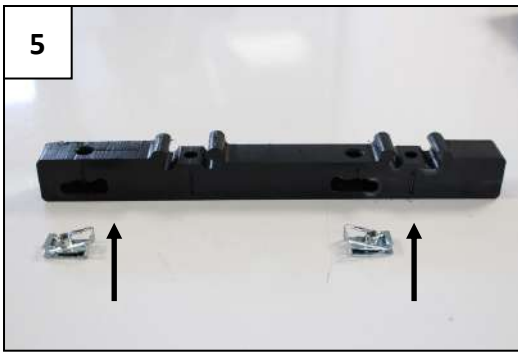


2x OEM screws + 2x M8 Washers



Use 1x TH6x55mm + 2x M6 Washer + 1x Em6f (**Watch the tutorial video for a better visibility**)
Regardez la vidéo pour une meilleure visibilité

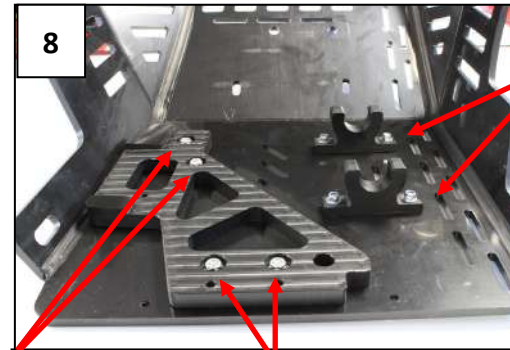




Insert the 15mm plastic parts inside of the frame holes
Insérer les pièces plastiques 15mm dans les trous du cadre



2x Tfhc 6x45mm + 2x M6 Washers + 2 Em6f
Watch the video for more detail
Regardez la vidéo pour + de détail



4x Tfhc 6x25mm + 4x M6 Washers +
4x Em6f + 2x PM01-04-208

4x Tfhc 8x25mm + 4x M8 Washers +
4x Em8f + 1x PM01-04-209

VIDEO



Clip the skid plate on the frame tube
Clipser le sabot sur le tube du cadre



4x Th 6x30mm + 4x M6 Large Washers
Video for better visibility



2x Screws 6x25mm