



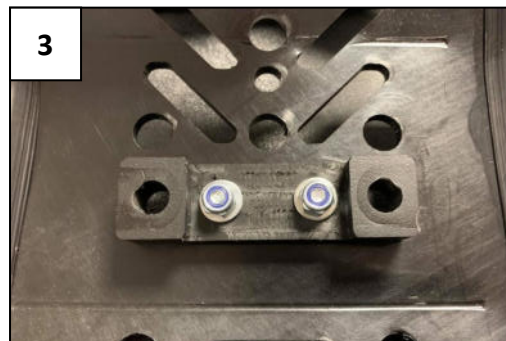
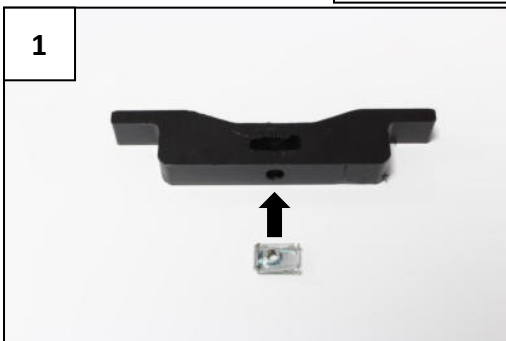
**AX1575**

Honda CRF450R/RX  
Skid Plate 6mm

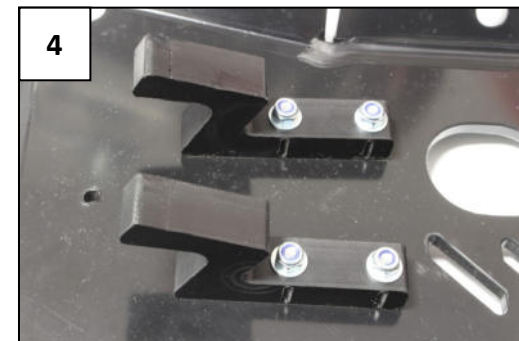
- 3 NE01-11-001
- 1 NE01-04-002—Clamped bolt
- 2 NE01-02-002—TFHC 6x20
- 2 NE01-02-003—TFHC 6x25
- 2 NE01-02-004—TFHC 6x30
- 6 NE01-03-001—R.M6
- 6 NE01-04-003—Em6f
- 2 PM01-04-207
- 1 PM01-04-205
- 1 PM01-05-012
- 1 NE04-01-187—Sticker



FITMENT VIDEO  
VIDEO DU MONTAGE



PM01-05-012 + 2 TFHC 6x20 + 2 R.M6  
+ 2 Em6f



2 PM01-04-207 + 2 TFHC 6x25 +  
2TFHC 6x30 + 2 R.M6 + 2 Em6f



3 NE01-11-001

Insert the front plastic bracket PM01-04-205 and lock it between the frame tubes  
*Insérer la bride de fixation avant PM01-04-205 and clipser là entre les tubes du cadre*