



**AX1560**

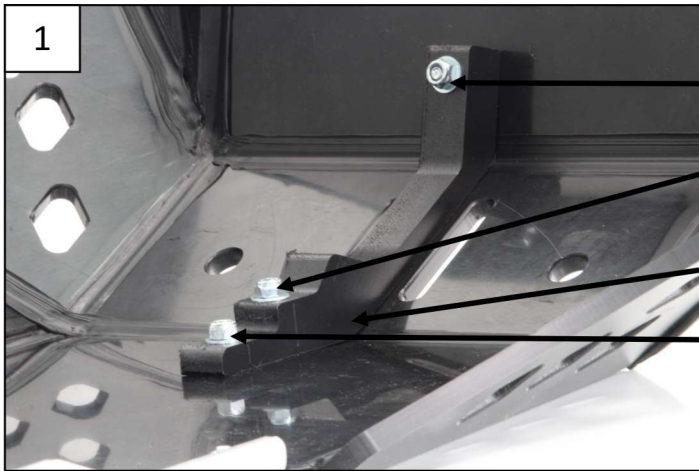
**Adventure Orange Skid plate**

KTM 790/890 Adventure/R

VIDEO ON

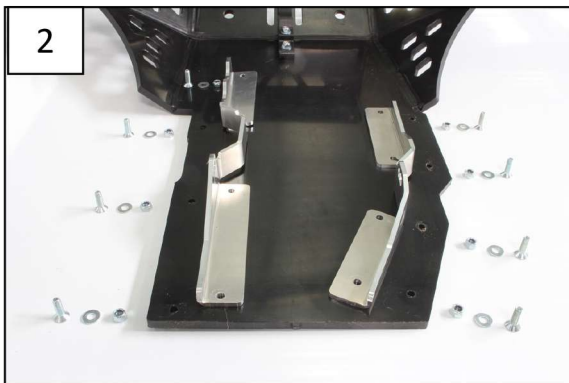


- 4 NE01-11-001
- 2 NE01-02-005 Tfhc 6x35mm
- 1 NE01-02-003 Tfhc 6x25mm
- 8 NE01-02-002 Tfhc 6x20mm
- 15 NE01-04-003 Em6f
- 15 NE01-03-001 M6 Washers
- 4 NE01-01-009 Tbhc 6x20mm
- 4 NE01-03-006 M6 large washer
- 1 PM03-04-103 Alu rear fixation
- 1 PM03-04-104 Alu rear fixation
- 1 PM03-04-105 Alu bracket Right
- 1 PM03-04-106 Alu bracket Left
- 2 NE09-01-001 Silent bloc
- 2 NE03-01-019 Spacer D10.5
- 1 PM01-08-001 Mud guard
- 1 PM01-04-191 Hdpe part 20mm
- 1 NE04-01-177 STICKER (3 units)



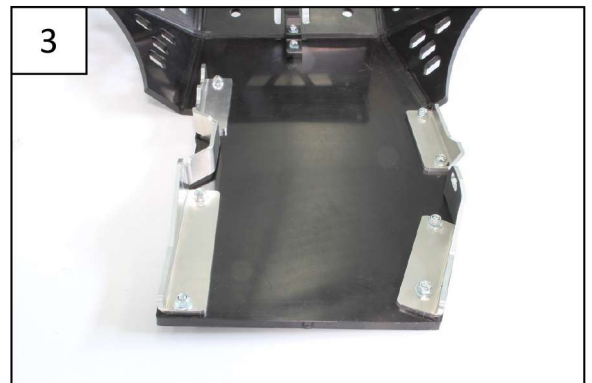
1

- TFHC 6x35mm
- EM6F
- M6 RING
- PM01-04-191**
- TFHC 6x25mm
- EM6F
- M6 RING



2

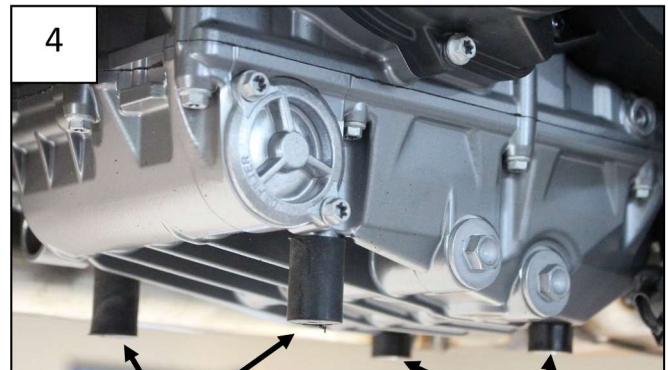
- TFHC 6x20mm
- EM6F
- M6 RING



3



CHECKING MEASURE: 230.5mm in between



4

NE09-01-001

ORIGINS



REINFORCED BRACKETS  
PM03-04-105 / PM03-04-106



USE THE FRONT FIXATION SCREW  
TO CENTER THE ALU PART THEN  
SCREW THE 2 POINTS ON THE WING



Alloy Spacer  
NE03-01-019

OEM Screw



NE01-11-001

MUD GUARD OPTION

VIDEO ON

